

14- Reducers

NOTE :

1. (?) --> **MB: Metal-Brass**
NB: Nickel-plated Brass

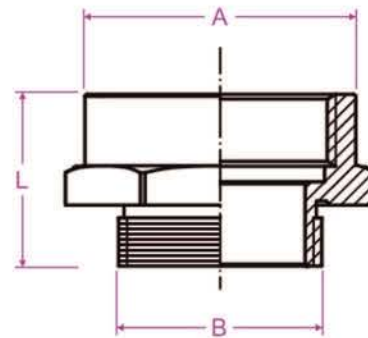
2. (A-B-C)--> **A: PG**
B: NPT
C: ISO METRIC



Nickel-plated Brass

PA: (PG)

ORDER CODE	A PG	B PG	L mm
PA14-13.5-11-?	13.5	11	16
PA14-16-11-?	16	11	16
PA14-16-13.5-?	16	13.5	16
PA14-21-11-?	21	11	20
PA14-21-13.5-?	21	13.5	20
PA14-21-16-?	21	16	20
PA14-29-13.5-?	29	13.5	22
PA14-29-16-?	29	16	22
PA14-29-21-?	29	21	22
PA14-36-16-?	36	16	25
PA14-36-21-?	36	21	25
PA14-36-29-?	36	29	25
PA14-48-21-?	48	21	27
PA14-48-29-?	48	29	27
PA14-48-36-?	48	36	27



PB: (NPT)

ORDER CODE	A inch	B inch	L mm
PB14-3/4-1/2-?	3/4"	1/2"	20
PB14-1-1/2-?	1"	1/2"	23
PB14-1-3/4-?	1"	3/4"	23
PB14-1 1/4-1/2-?	1 1/4"	1/2"	23
PB14-1 1/4-3/4-?	1 1/4"	3/4"	23
PB14-1 1/4-1-?	1 1/4"	1"	23
PB14-1 1/2-3/4-?	1 1/2"	3/4"	27
PB14-1 1/2-1-?	1 1/2"	1"	27
PB14-1 1/2-1 1/4-?	1 1/2"	1 1/4"	27
PB14-2-1-?	2"	1"	27
PB14-2-1 1/4-?	2"	1 1/4"	27
PB14-2-1 1/2-?	2"	1 1/2"	27
PB14-2 1/2-1 1/4-?	2 1/2"	1 1/4"	30
PB14-2 1/2-1 1/2-?	2 1/2"	1 1/2"	30
PB14-2 1/2-2-?	2 1/2"	2"	30
PB14-3-1 1/2-?	3"	1 1/2"	30
PB14-3-2-?	3"	2"	30
PB14-3-2 1/2-?	3"	2 1/2"	30



Metal-Brass

PC: (ISO METRIC)

ORDER CODE	A mm	B mm	L mm
PC14-25-20-?	25	20	20
PC14-32-20-?	32	20	23
PC14-32-25-?	32	25	23
PC14-40-20-?	40	20	23
PC14-40-25-?	40	25	23
PC14-40-32-?	40	32	27
PC14-50-25-?	50	25	27
PC14-50-32-?	50	32	27
PC14-50-40-?	50	40	27
PC14-63-32-?	63	32	27
PC14-63-40-?	63	40	27
PC14-63-50-?	63	50	27
PC14-75-40-?	75	40	30
PC14-75-50-?	75	50	30
PC14-75-63-?	75	63	30

