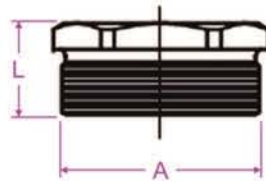


15- Pressure screw (brass bushing)

NOTE :

1. (?) --> **MB: Metal-Brass**
NB: Nickel-plated Brass

2. (A) --> **A: PG**



Nickel-plated Brass

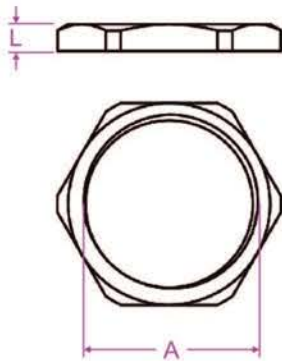
PA: (PG)

ORDER CODE	A PG	L mm
PA15-11- ?	11	15-20
PA15-13.5- ?	13.5	15-20
PA15-16- ?	16	15-20
PA15-21- ?	21	15-20
PA15-29- ?	29	15-20
PA15-36- ?	36	15-20
PA15-48- ?	48	15-20



Metal-Brass

16- Locknut



Metal-Brass



Nickel-plated Brass

NOTE :

1. (?) --> **MB: Metal-Brass**
NB: Nickel-plated Brass

2. (A-B-C) --> **A: PG**
B: NPT
C: ISO METRIC

PA: (PG)

ORDER CODE	A PG	L mm
PA16-11- ?	11	3.5
PA16-13.5- ?	13.5	3.5
PA16-16- ?	16	3.5
PA16-21- ?	21	3.5
PA16-29- ?	29	4
PA16-36- ?	36	5
PA16-48- ?	48	5

PB: (NPT)

ORDER CODE	A inch	L mm
PB16-1/2- ?	1/2"	3.5
PB16-3/4- ?	3/4"	4
PB16-1- ?	1"	4
PB16-1 1/4- ?	1 1/4"	4.5
PB16-1 1/2- ?	1 1/2"	4.5
PB16-2- ?	2"	5
PB16-2 1/2- ?	2 1/2"	5.5
PB16-3- ?	3"	6

PC: (ISO METRIC)

ORDER CODE	A mm	L mm
PC16-20- ?	20	3
PC16-25- ?	25	3
PC16-32- ?	32	3.5
PC16-40- ?	40	3.5
PC16-50- ?	50	4.5
PC16-63- ?	63	5.5
PC16-75- ?	75	6
PC16-90- ?	90	6.5
PC16-100- ?	100	7